



شركة الوسام للتجارة ذ.م.م.  
AL WISAM TRADING CO. L.L.C.



INDUSTRIAL AUTOMATION, CONTROL, AND POWER SYSTEMS



☎ : (+971 6) 539 03 83

📄 : 81933, Sharjah-U.A.E.

🖱 : [www.alwisamllc.com](http://www.alwisamllc.com)

☎ : (+971 6) 539 03 84

✉ : [awtc@alwisamllc.com](mailto:awtc@alwisamllc.com)

*Quality*  
Products  
Back-up





## شركة الوسام للتجارة ذ.م.م. AL WISAM TRADING CO. L.L.C.

### INDUSTRIAL AUTOMATION, CONTROL, AND POWER SYSTEMS BUSINESS UNIT

#### The One Stop Platform for Empowering Industries with Advanced Electromechanical Solutions!

**AWTC Industrial Automation, Control and Power Systems** is a division of **Al Wisam Trading Co. L.L.C.**, a renowned name in the industry with a long-standing commitment to excellence. Building on our legacy of success, we also specialize in delivering comprehensive electromechanical solutions designed to optimize efficiency, enhance productivity and drive growth for our clients.

**Mission Statement :** Our mission is to empower industries through cutting-edge industrial automation solutions powered by professional technical services. We are committed to delivering innovative technologies to enhance efficiency, safety, and sustainability, leading to enabling our clients to achieve unprecedented levels of productivity and competitiveness. Through relentless dedication to excellence, we aim to be the preferred partner in driving the evolution of industrial automation for a smarter and more connected future.

**Vision Statement :** Our vision is to be a global leader in industrial automation, renowned for our transformative technologies and unwavering commitment to customer success. We envision a world where industries seamlessly integrate advanced automation solutions, optimizing operations, minimizing environmental impact, and fostering a new era of industrial excellence. By pioneering breakthroughs and initiating collaborative relationships, we aspire to be the catalyst for positive change, shaping the future of industrial automation and contributing to the advancement of a sustainable and interconnected world.

#### Values :

- **Innovation :** We continuously explore new technologies and methodologies to stay at the forefront of the industry.
- **Reliability :** Our commitment to quality and reliability ensures that our solutions exceed expectations and withstand the test of time.
- **After Sales :** We prioritize our clients' needs and strive to deliver exceptional service and support at all times.



## AL WISAM - *For Quality and Professionalism*

### Why AL WISAM?

#### 1. ISO & ICV certified company



#### 2. Expertise in SALE / RENTAL

- Quality products and solutions
- Competitive prices and terms
- Easy availability
- Ethical, customer oriented & safety centered business practices
- Professional processing of your requirements

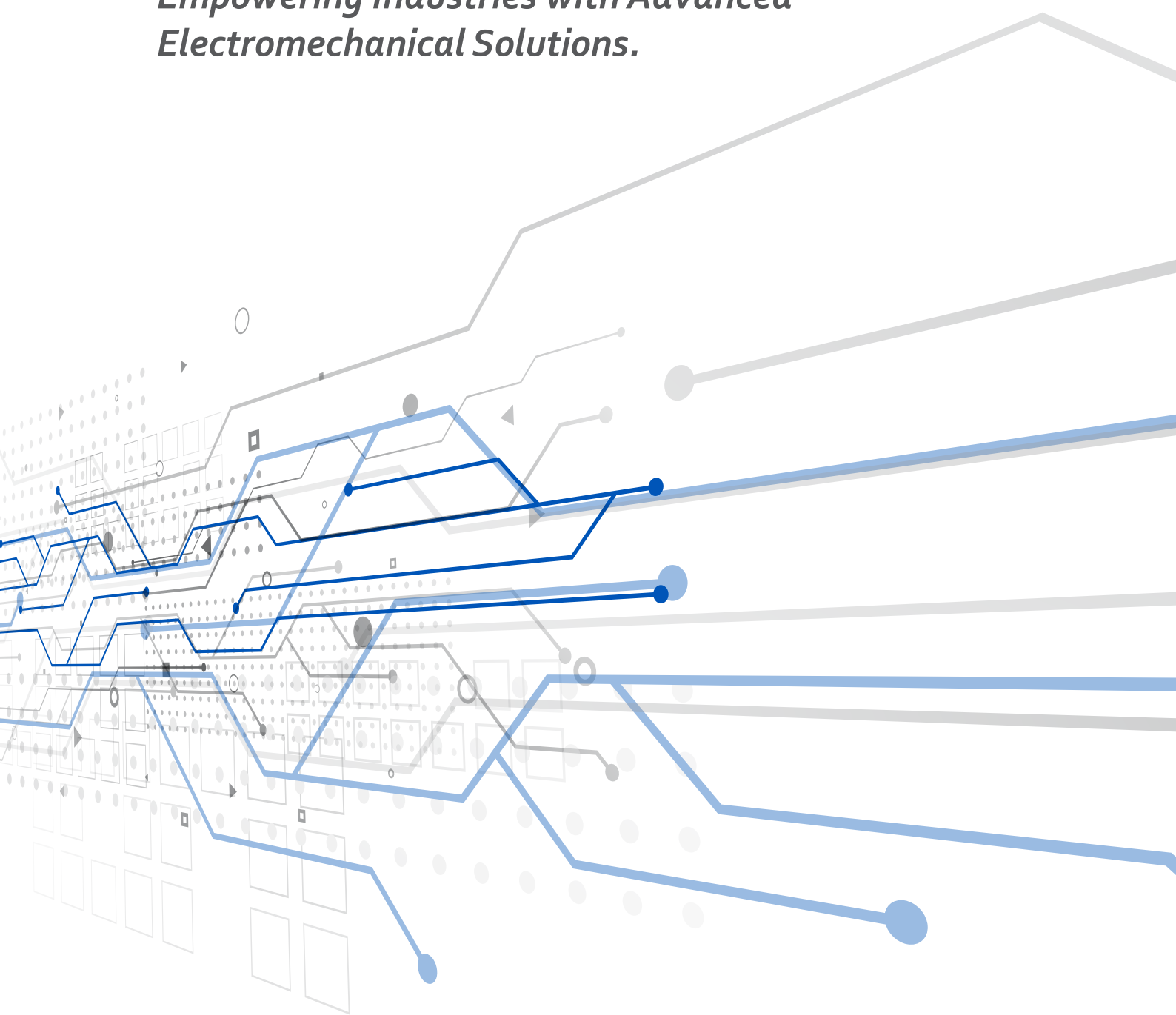
#### 3. Expertise in AFTER SALE SUPPORT

- Genuine Spare Parts-easy availability
- Warranty
- Routine Service
- Breakdown Service
- Repair facilities
- Prompt Response
- Service contracts
- Training



# AWTC Industrial Automation, Control, and Power Systems.

*Empowering Industries with Advanced  
Electromechanical Solutions.*





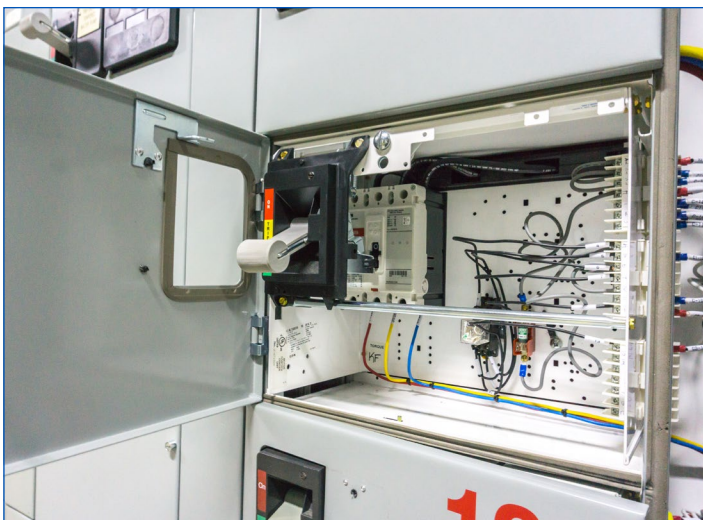
# Our Solutions

## Core Offerings:

- Motor Control Centers (MCCs)
- Low Harmonic Motor Control Solutions
- Customized VFD, Softstarter and Motor Control Panels
- Power Systems
- Robot Cells and Robotic Automation Systems
- Programable Logic Controller (PLC) and Human Machine Interface (HMI) Panels
- Switchgear Assembly
- Supervisory Control and Data Acquisition (SCADA) and Distributed Control System (DCS)
- Instrumentation
- Technical Services



## Motor Control Centers (MCCs) and Low Harmonic Motor Control Solutions





## Customized VFD, Softstarter and Motor Control Panels



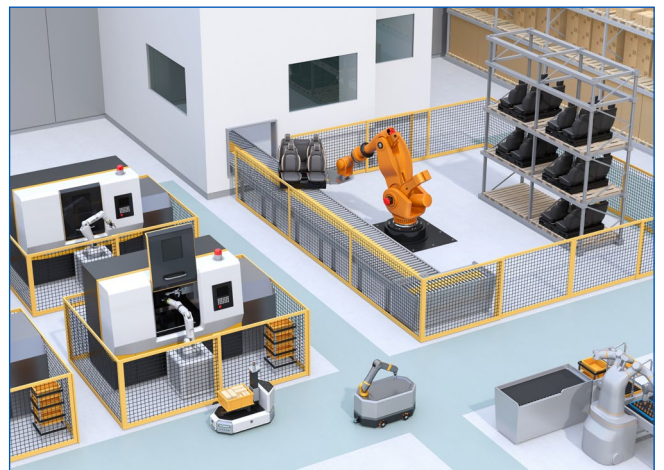




## Power Systems

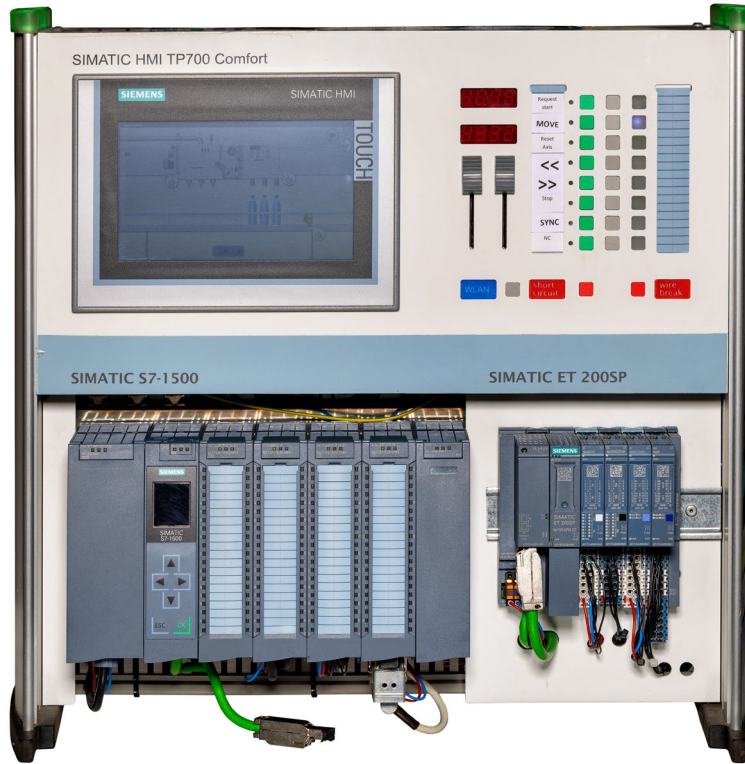


## Robot Cells and Robotic Automation Systems

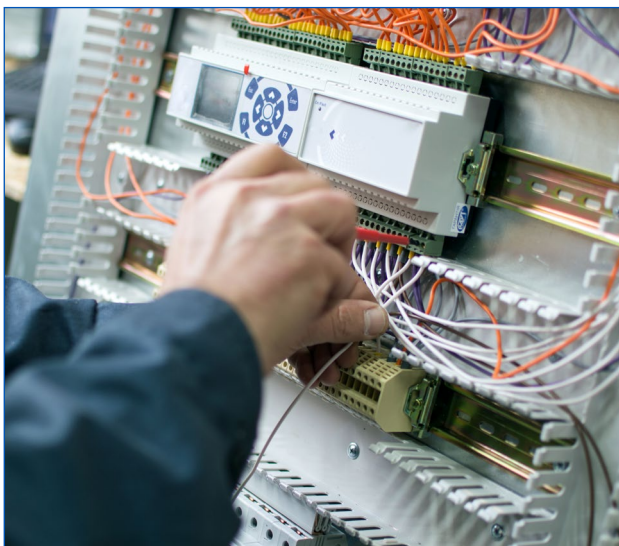




## PLC and HMI Panels



## Switchgear Assembly



## SCADA and DCS





## Instrumentation



## Technical Services





# Our Products

- LV VFDs
- MV VFDs
- Low Harmonic VFDs
- LV Softstarters
- MV Softstarters
- Active Dynamic Filters
- Power Quality Components (Reactors and Filters)
- Lift VFDs / Drives
- Crane & Hoist VFDs / Drives
- Solar Pump VFDs / Drives
- Motion / Servo Drives and Motors
- PLCs and HMIs
- Robot Systems / Arms with Controllers



## LV VFDs

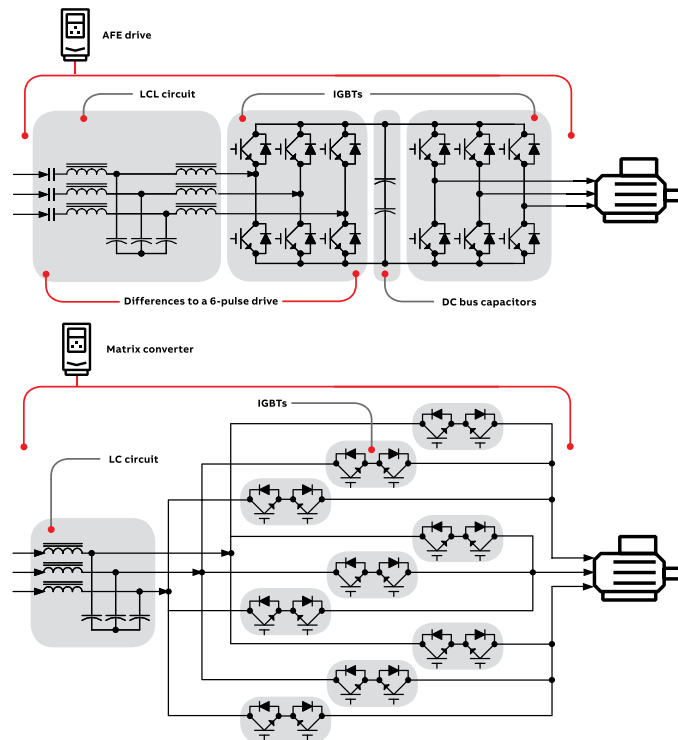




## MV VFDs



## Low Harmonic VFDs

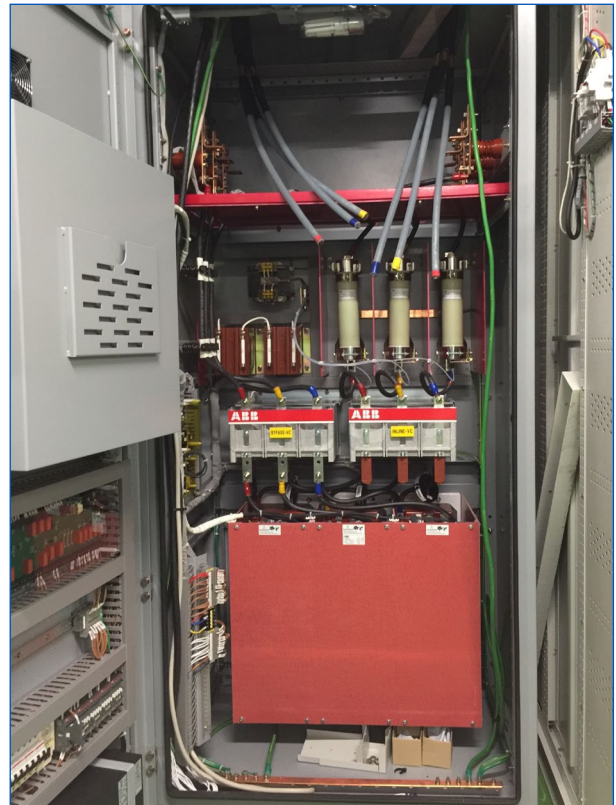




## LV Softstarters



## MV Softstarters



## Active Dynamic Filters



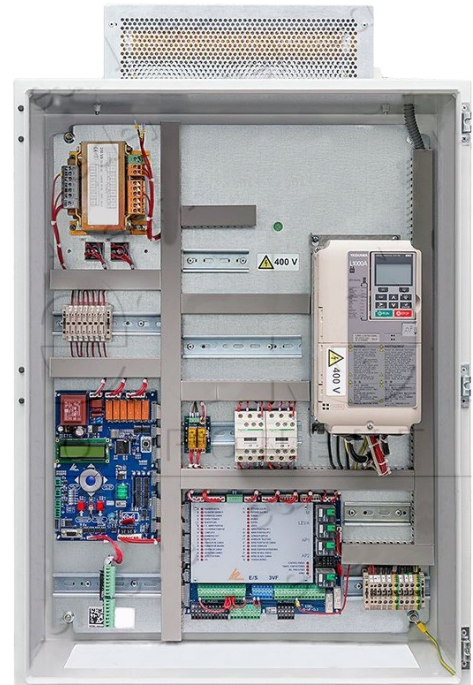
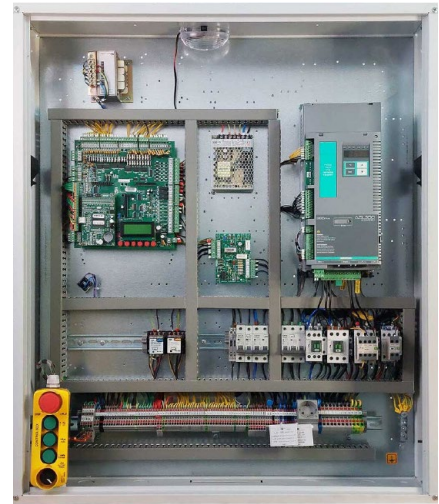
## Power Quality Components (Reactors and Filters)







## Lift VFDs / Drives



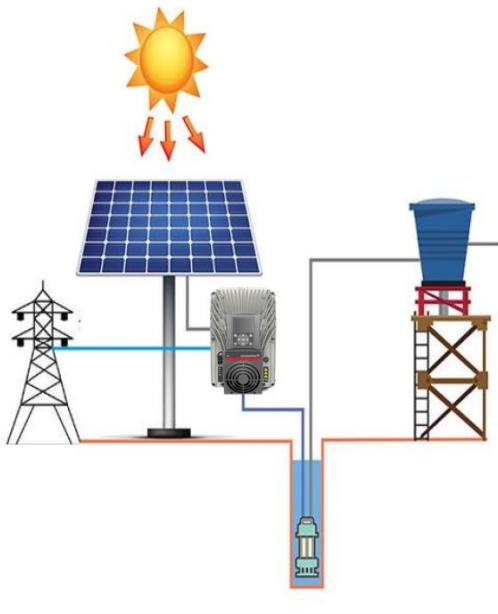


## Crane & Hoist VFDs / Drives



## Solar Pump VFDs / Drives

### Application of Solar Pump System



Swimming pool



Drinking water



Agricultural irrigation



Livestock drinking water



Desert control



Scenic fountain



## Motion / Servo Drives and Motors

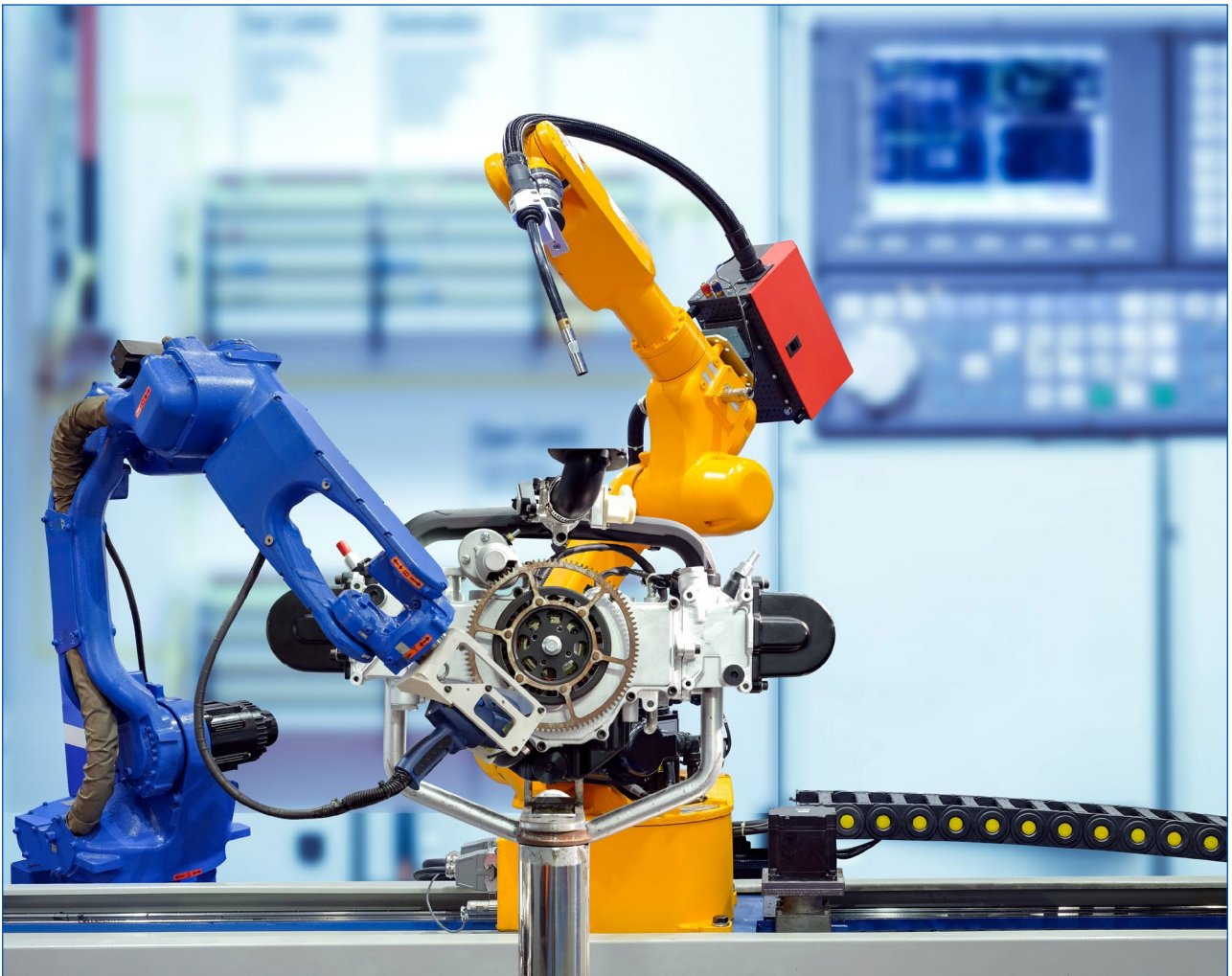
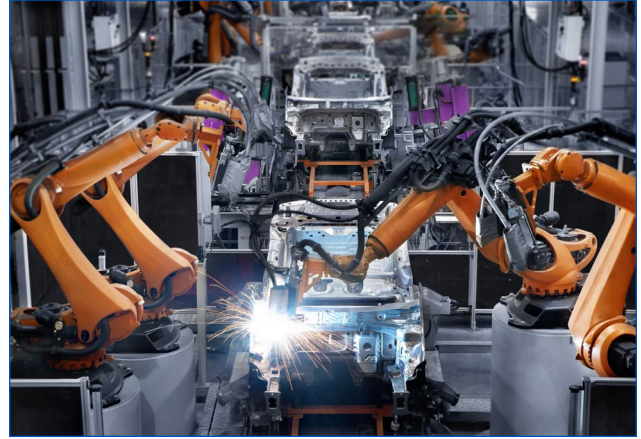
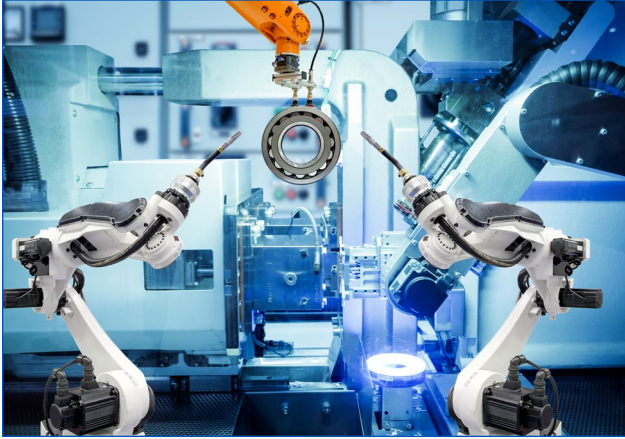


## PLCs and HMIs





## Robot Systems / Arms with Controllers





## AWTC Construction & Industrial Plant & Machinery Division





81933, Sharjah - U.A.E. | 
 (+971 6) 539 03 83 | 
 (+971 6) 539 03 84 | 
 awtc@alwisamllc.com | 
 www.alwisamllc.com

GPS Coordinates : N 25° 19'03.00" E 55° 25'37.00" ( Shop No. 15 & 16 )



Construction Hoists, Industrial Elevators,  
Work Platforms and Lifting Equipment



Light Compaction Equipment



Construction Products



Masonry Saw for Marble, Tiles,  
Blocks, Kerbstone Etc.



Concrete Equipment,  
Bar Bending & Cutting Machines



Suspended Platform,  
Loading Platform,  
Pallet Trucks & Stackers



Bitumen Spray Tanks  
& Chip Spreaders



Portable Generators

INDUSTRIAL AUTOMATION, CONTROL, AND POWER SYSTEMS