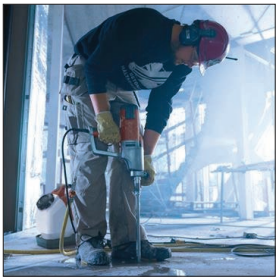


DM 340



TECHNICAL SPECIFICATIONS

MODEL	DM 340	
Spindle speed (rpm)	First speed	240
	Second speed	530
	Third speed	900
Recommended drill diameter (mm)*	First speed	200 - 400
	Second speed	100 - 200
	Third speed	50 - 100
Outer spindle thread	1 1/4" 7 UNC	
UNC water coupling	G 1/4"	
Weight (kg)	14.0	
Sound power level (dB (A))	97	
Sound pressure level (dB (A))	88	
ELECTRIC MOTOR		SINGLE PHASE
Power (kW)	3.3	
Voltage (V)	220/240	
Speeds	3	



DS 500
Pressurized water tank
(Optional)

*Drill bit not included.

Powerful electric core drill for use with stand. DM 340 is the perfect choice for medium and heavy core drilling where high production rates are needed, especially with large diameter core bits. Recommended diameter up to 400 mm. The motor is very easy to operate with several ergonomic features facilitating drilling and set up. Suitable for water evacuation, ventilation, angle drilling and stitch drilling.

Distributor:



شركة الوسام للتجارة ط.م.م.
AL WISAM TRADING CO. L.L.C.

☎ : (+971 6) 539 03 83 ✉ : awtc@alwisamllc.com
☎ : (+971 6) 539 03 84 🌐 : www.alwisamllc.com
📍 : 81933, Sharjah - U.A.E.