



شركة الوسام للتجارة ذ.م.م.
AL WISAM TRADING CO. LLC



GEDA®
SH 250 W

**THE RACK AND PINION LIFT
WITHOUT COMPROMISES**



GEDA®
ORIGINAL



81933, Sharjah - U.A.E. |



(+971 6) 539 03 83 |



(+971 6) 539 03 84 |



awtc@alwisamllc.com |



www.alwisamllc.com

20250804

GEDA – WHAT WE DO



GEDA – WHAT WE DO

GEDA – our philosophy

Successful for over 90 years

High quality, reliable deliveries and customer-focused service are a matter of course for GEDA. With a wealth of experience and a high level of vertical integration of around 80 %, we have been successful in the international market for over 90 years and are among the leading manufacturers of construction hoists. This high level of vertical integration allows us to ensure an optimum spare parts supply. Our unique know-how and our expertise are also paying

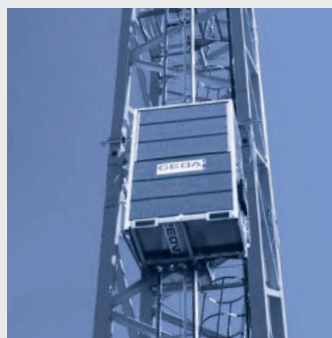
off in the industrial sector. Our special strengths include our comprehensive international experience in the field of industrial elevators and our specialisation in custom products and tailor-made solutions. This is where our rack and pinion technology, which has proven successful over the decades, comes into play, delivering excellent results here as well.



TEMPORARY INSTALLATIONS



PERMANENT INSTALLATIONS



SPECIAL PRODUCTS



SERVICE

Always with an ear to the market, we have developed a hoist for the industrial sector that is optimally adapted to the requirements of wind turbines. This new device enables safe, fast and comfortable transport of passengers and materials with our rack and pinion technology that has proven successful over the decades. In addition to this, the lift can be used already during the construction phase of the wind turbine and grows along with the installation – safety and efficiency combined in one device, no compromises!



GEDA SH 250 W

GEDA®
SH 250 W

Technical data:



250 kg / 2 persons



210 m (more on request)



21 m/min



Up to 3,300 m range
(with recuperation), optionally with 1
or 2 batteries (industrial cells).



HIGHLIGHTS OVERVIEW



**Safer, more robust rack and pinion lift
– designed for wind turbines**

**Sturdy guiding and therefore extremely
smooth running**

**Can be used already during the
construction phase of the wind
turbine in compliance with standards**

Remote diagnostics for fast service

Immediately ready to use (plug & play)

**Can be retrofitted on existing wind
turbines**

HIGHLIGHTS OVERVIEW

HIGHLIGHTS



Gear rack and pinion:

Maximum durability and reliability – for a service life without compromises. Even in the roughest conditions.



User-friendly HMI:

Supports state-of-the-art fault diagnostics and simplifies the maintenance process with intuitive operation (touch display).



Pre-installed battery packs:

Depending on the requirements, with 1 or 2 packs for maximum flexibility.



Li-Ion



HIGHLIGHTS OVERVIEW

1 Roof, Floor, and Carriage: The roof is fully enclosed, easy and quick to open, and equipped with a perforated sheet viewing panel. It is used for visual inspection and monitoring of the travel path upwards. Emergency exit via the floor with proven corrosion protection. The carriage features a vertical roller door on either the A or B side.



2 Drive carriage: Designed in a well-thought-out X-configuration, which ensures easy accessibility. Proven safety catch mechanism using in-house manufacturing.

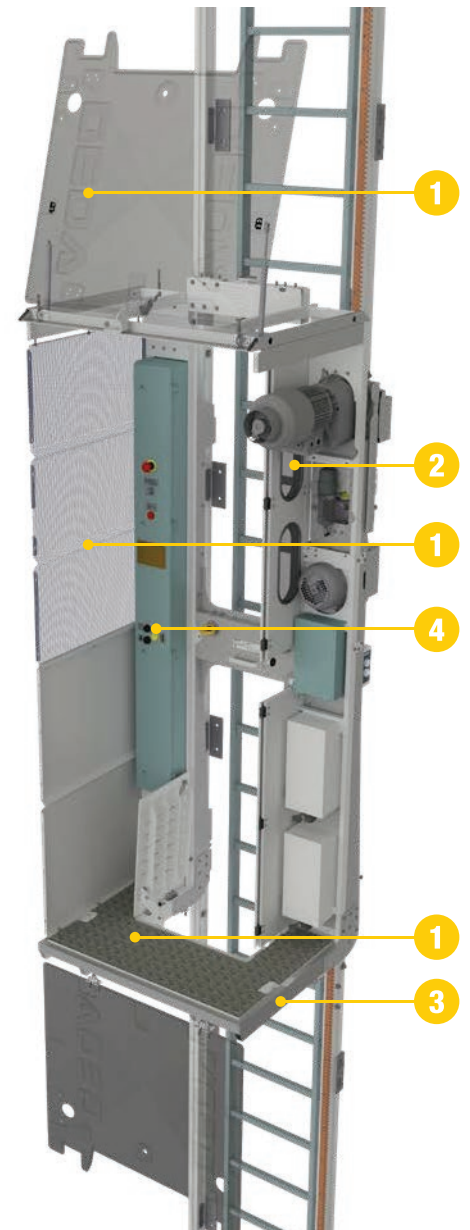
3 Integrated underride guard: For maximum safety



4 Control box and operator panel: Equipped with emergency stop, up / down / SNL (stop next landing) buttons, optional keypad for floor selection, and overload indicator. Intuitive display with clear error descriptions and troubleshooting instructions. Remote diagnostics capability included.



- ✓ Fast and easy installation, already during construction of the wind turbine
- ✓ Easy entry and exit on A and/or B side
- ✓ Frames and panels made of solid aluminium
- ✓ Corrosion protection also for outdoor use
- ✓ Uses proven rack and pinion technology and know-how
- ✓ Service & Maintenance: „Train the Trainer“ concept



The side panels were made transparent to provide a better view.

ADVANTAGES OF THE GEDA SOLUTION

GEDA SH 250 W – GEDA “all-in package”

The **benefits** of our wind turbine lift are obvious. The **battery-operated** GEDA SH 250 W already proves indispensable during assembly of the wind turbines. The **low maintenance and service effort** saves **time** as well as **money**, making the lift much more durable while ensuring lower costs and fewer system failures

than is the case with similar lifts with wire rope. In addition to this, **integrated monitoring and inspection points** inside the car significantly facilitate use of the lift.

	SH 250 W - rack and pinion	Wire rope and ladder-guided wire rope lifts
Installation	<ul style="list-style-type: none"> • Hoist can officially be used during the installation • No interruptions / limitations due to weather • Faster, safer and less expensive installation process 	<ul style="list-style-type: none"> • Can be used only after official clearance • People need to climb or go up by crane
Guidance	<ul style="list-style-type: none"> • Straight and sturdy (comfort!) 	<ul style="list-style-type: none"> • Rope guided: wobbly
Maintenance	<ul style="list-style-type: none"> • During lifetime, no exchange of rack or pinion necessary • Replacement of overspeed safety brake every 6 years (safety brake independent of hoist!) • Credit note for exchanged safety brake • Great total cost of ownership ratio 	<ul style="list-style-type: none"> • Wires and ropes need to be exchanged approx. every 2-3 years due to damages • Bearing and safety rope – yearly testing • Replacement overspeed safety gear every 5 years (interconnected with hoist depending on manufacturer)
Triggered overspeed safety brake	<ul style="list-style-type: none"> • Smooth stop due to spring loaded overspeed safety brake → GEDA product • No shaking, swinging, wobbling, ... 	<ul style="list-style-type: none"> • Hard stop, huge impact to operator • Swinging of wire-rope hoist
Power supply	<ul style="list-style-type: none"> • Power packs can be stored inside the windmill • Safe and million times tested batteries 	<ul style="list-style-type: none"> • High invest for cables, cable routing and restoration of power cables • High invest for space of cable periphery • Higher wind mill - thicker cables - more weight • Cable become knotted during drive

SERVICE



- Instant support function and supplementary digital service functions
- Remote access and monitoring; monitoring of the structural integrity
- 95 years of experience with machines for outdoor use
- Flexible approach for training solutions / train the trainer
- Authorised service partners and official distributors worldwide
- Superior spare parts supply due to vertical integration
- Over 80 % vertical integration

ADVANTAGES OF THE GEDA SOLUTION



Support for technical questions



Repair and maintenance at the GEDA Service Centre



Comprehensive spare parts service



High level of spare parts availability



Fast delivery



Planning and implementation of field service tasks



Reliable service – worldwide



Instruction and technical support on site



External service partners

ADDED VALUE

GEDA rack and pinion hoists

Vertical mobility made easy

GEDA rack and pinion hoists are an efficient alternative to conventional wire rope hoists. They are easy to install, highly robust in rough conditions and can be installed outdoors. These rack and pinion hoists are particularly interesting for wind turbine companies due to their high level of reliability and

durability. Compared with the widely used wire rope hoists, the innovative GEDA rack and pinion hoists are significantly more robust and require no additional on-site facilities such as a machine room or shaft.

GEDA rack and pinion hoists

- Direct connection to the structure on site
- Less maintenance compared to wire rope hoists
- No shaft or machine room required
- Replaces existing hoists possible
- Remote monitoring possible
- Display with intuitive user guidance



ADDED VALUE

ADDED VALUE



Focus on ergonomics, health & safety

The new GEDA SH 250 W lightens the workload by relieving workers from exhausting and, crucially, dangerous climbs on the wind turbine. It vastly improves safety.



Efficient logistics & economic efficiency

It is self-evident that the use of GEDA lifts saves not only time, but also money. Excellent total cost of ownership!



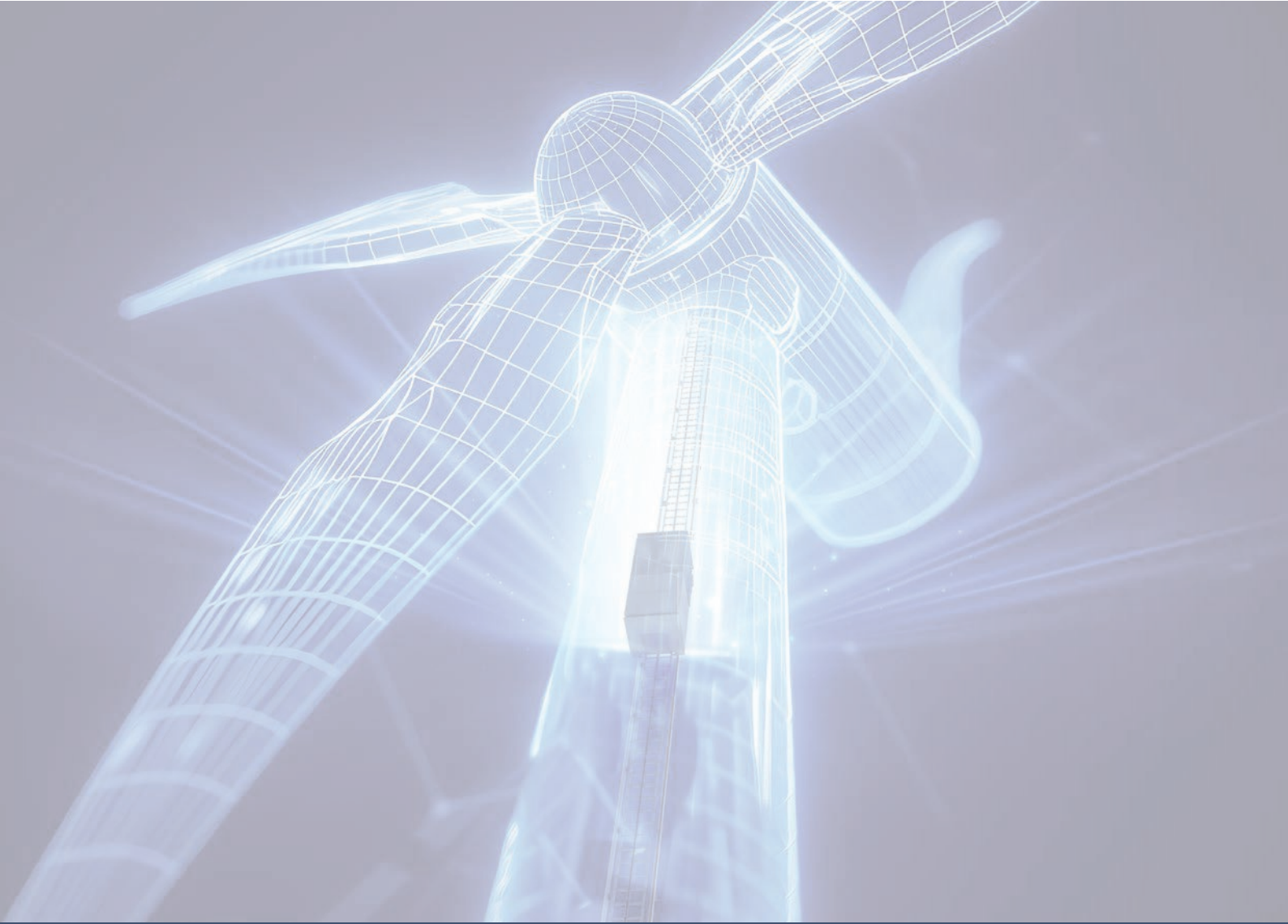
Support for maintenance tasks

When things have to move quickly, it is important to get to the work area immediately and without any unnecessary hazards.



Fast and flexible installation

Easy installation, even in existing wind turbines. Also an indispensable helper for construction of the turbines.





شركة الوسام للتجارة ذ.م.م.
AL WISAM TRADING CO. L.L.C.

☎ : (+971 6) 539 03 83 ✉ : awtc@alwisamllc.com
☎ : (+971 6) 539 03 84 🌐 : www.alwisamllc.com
📍 : 81933, Sharjah - U.A.E.



**AUTHORIZED
SERVICE
PARTNER**

Authorized Distributor